

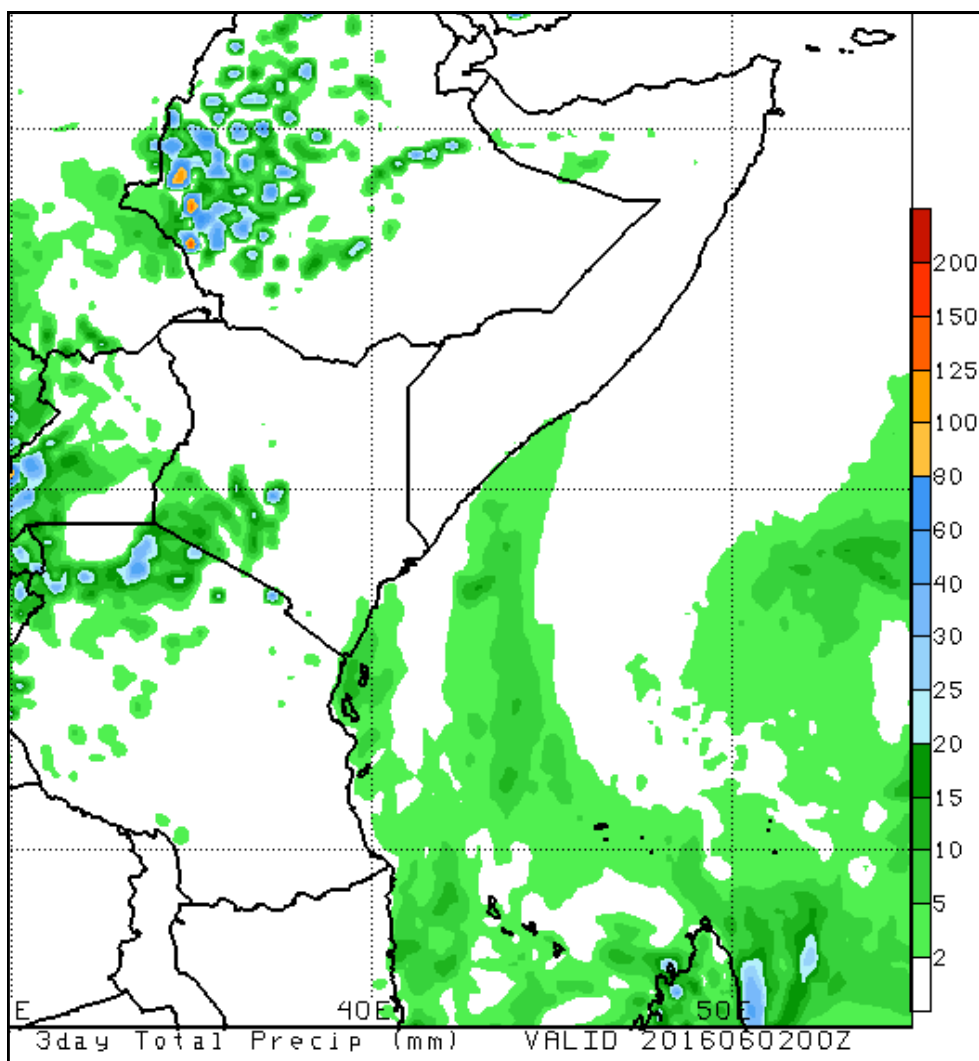
# Rainfall Forecast Somalia

**Issued: 30/05/2016**

Light rains are expected in a few places within Somaliland as well as the coastal areas of southern regions. The rest of the country and the upper parts of Juba and Shabelle River basins in Ethiopia will remain dry during the forecast period.

The river level in the upper parts of Shabelle at Belet Weyne has slightly decreased from the week-long bankful level, but still remain within the high risk level. Downstream the river levels are expected to continue rising for the next few days, posing a risk to flooding especially in middle and lower reaches with existing open and weak river banks.

**3-day accumulated rainfall forecast (30/05/2016 to 02/06/2016)**



Each cell on the map represents the forecasted accumulated rainfall over the next 72 hours

The full forecast grid is available for download at [http://www.cpc.ncep.noaa.gov/products/international/cpci/data/00/fcsts\\_eafrica.shtml](http://www.cpc.ncep.noaa.gov/products/international/cpci/data/00/fcsts_eafrica.shtml)

This update is produced by the: FAO - Somalia Water and Land Information Management—SWALIM. For more information regarding this product please contact [SO-hydro@fao.org](mailto:SO-hydro@fao.org) or visit <http://www.faoswalim.org>

## SWALIM Technical Partners

## SWALIM Funding Agencies