



# Somalia Rainfall Forecast

Issued: 20 November 2019

Map 1 and 2 shows the cumulative rainfall forecast for the next three and seven days respectively which is calling for moderate to heavy rains across the country as well as within the Ethiopian highlands. In particular, heavy rains of 50mm to 80mm are anticipated in the north western regions on 22nd and 23rd November 2019. The north eastern parts of the country which have remained dry since the beginning of the season are expected to receive light to moderate rains during the forecast week. The Juba and Shabelle Basins within Somalia and Ethiopia will also see an increase in rainfall activities, as more than 100mm of rainfall is foreseen in the upper reaches of the catchments inside Ethiopia. The central regions of Mudug and parts of Nugaal will remain mostly dry.

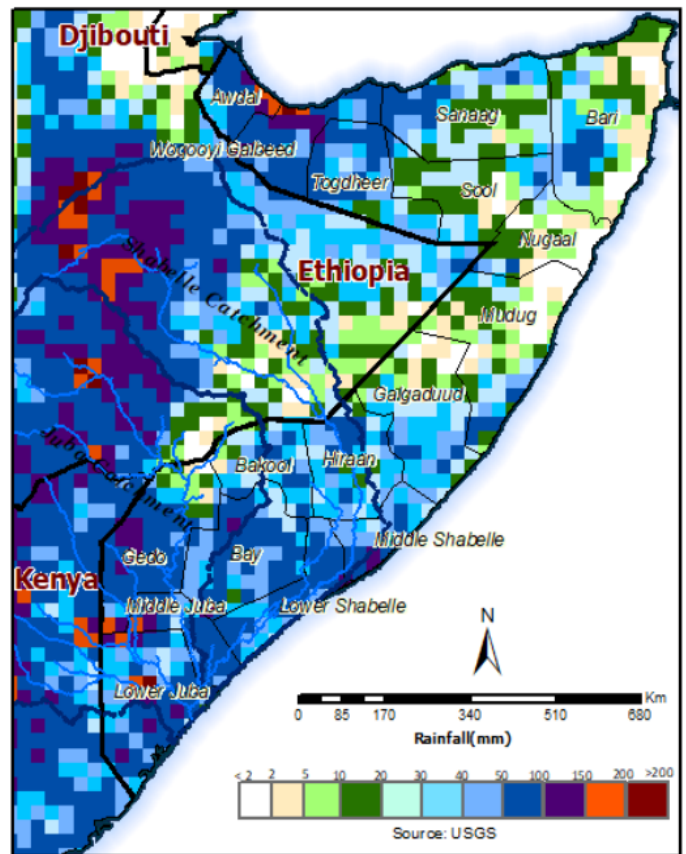
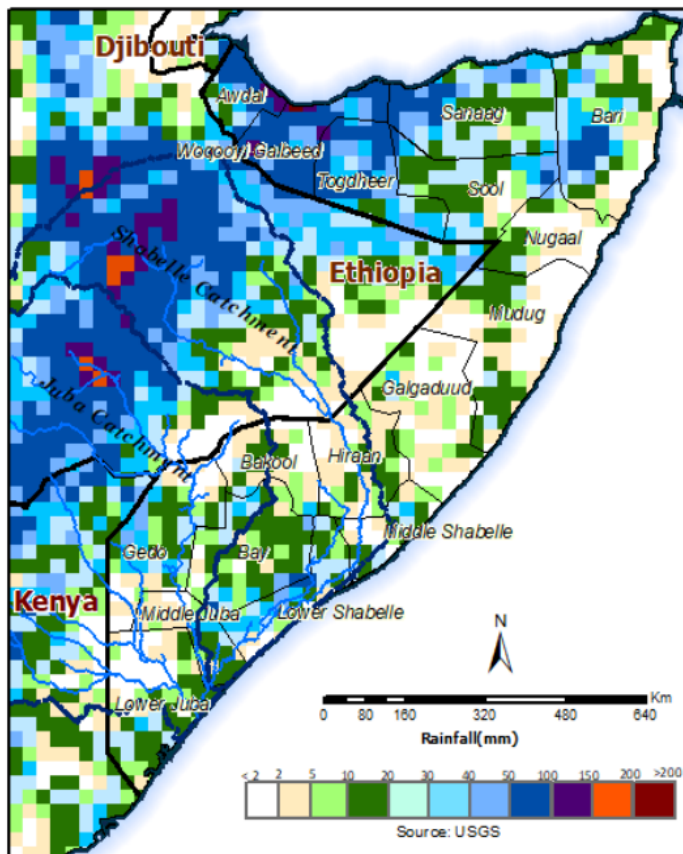
River levels along the Shabelle remain high and are anticipated to remain so in the coming week given the current situation and foreseen rains. There remains a moderate risk of flooding along the river. Observed river levels along the Juba continued to drop and are currently within the normal at this time of the year. Given the forecast the levels will start to increase towards the end of the week with minimal risk of flooding along the Juba.

Mild to moderate levels of flash floods are expected in low lying areas of Gedo, Bay, Bakool and northern regions in the coming week.

Users are advised that this is a forecast, and at times there may be discrepancies between estimates and actual amounts of rainfall received. Information on the forecast and observed river levels are updated daily on this link: <http://frrims.faoswalim.org>.

Map 1: 3 day cumulated rainfall forecast (20 - 22 Nov 2019)

Map 2: 7 day cumulated rainfall forecast (20– 26 Nov 2019)



This update is produced by the: FAO - Somalia Water and Land Information Management—SWALIM Project. For more information please contact [swalim@fao.org](mailto:swalim@fao.org) or visit <http://www.faoswalim.org>

FAO SWALIM Technical Partners:



SWALIM is Managed by FAO and Currently Funded by:

