



# Somalia Rainfall Forecast

Issued: 17 May 2019

The Gu 2019 rains continued to spread across Somalia over the last week with many stations recording moderate to heavy rains of more than 50mm total rainfall. Specifically parts of Somaliland and the central areas bordering Ethiopia recorded heavy rains that led to flash floods and some damages to infrastructure. Moderate to high rains were also received in Ethiopian highlands over the same period. River levels along the Shabelle and Juba continued to increase, reaching the long term mean for the first time since the start of the season.

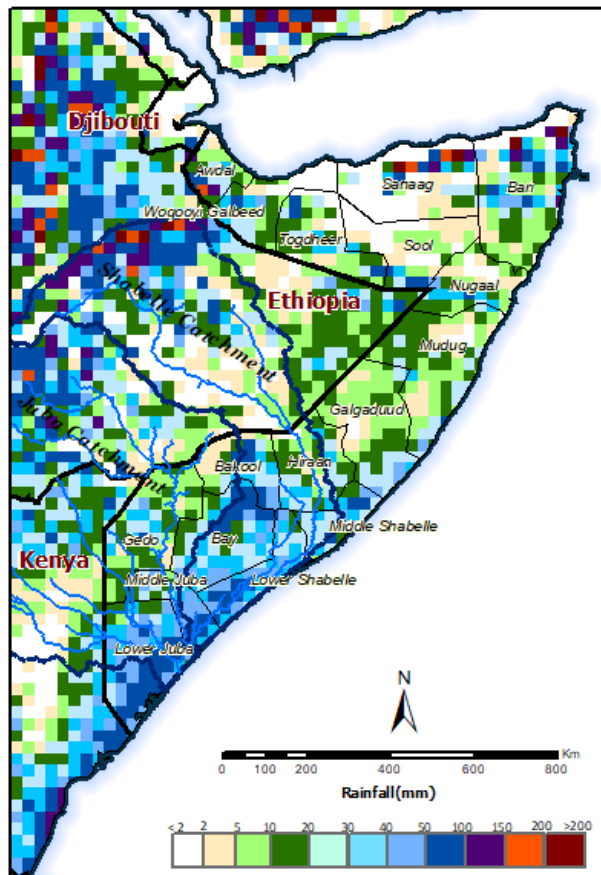
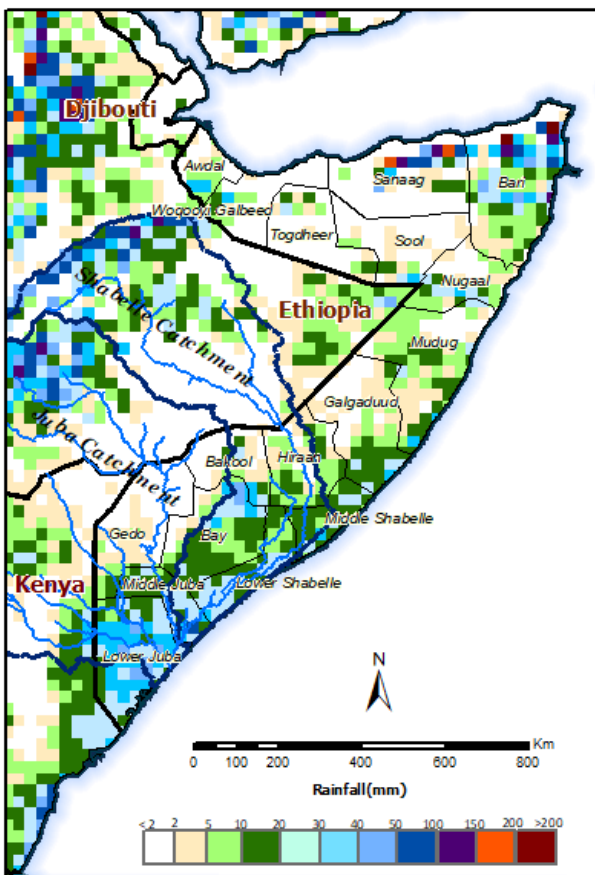
The cumulative rainfall forecast for the next 3 days (Map 1) indicates light to moderate rains across the entire country, apart from Somaliland and parts of southern regions around Gedo where little or no rains are foreseen. The rains are expected to increase further as the week progresses but with lower intensity compared to previous week as seen in (Map 2).

It is worth noting that the Gu rainy season started late in Somalia, and the rainfall amounts recorded so far are significantly below normal, with poor temporal and spatial distribution. More rains are required to reverse the damage that has been caused by the poor rains. With no significant rains foreseen until the end of the season, the existing situation may deteriorate further in all the water dependent sectors.

Users are advised that this is a forecast and at times there may be discrepancies between forecast and actual amounts of rainfall received. The forecast, observed river levels and rainfall amounts are updated on a daily basis and can be found on this link: <http://frrims.faoswalim.org>.

Map 1: 3 day cumulated rainfall forecast (17 - 19 May 2019)

Map 2: 7-day cumulated rainfall forecast (17– 24 May 2019)



This update is produced by the: FAO - Somalia Water and Land Information Management—SWALIM Project. For more information please contact [SO-hydro@fao.org](mailto:SO-hydro@fao.org) or visit <http://www.faoswalim.org>

FAO SWALIM Technical Partners:



SWALIM is Managed by FAO and Currently Funded by:



Swiss Agency for Development and Cooperation SDC