



Somalia Rainfall Forecast

Issued: 14 October 2019

The last few days saw an increase in rainfall activities in the southern and northwestern regions of the country. Northeastern and central regions did not record any significant amounts of rainfall. The Ethiopian highlands recorded heavy rains during the same period.

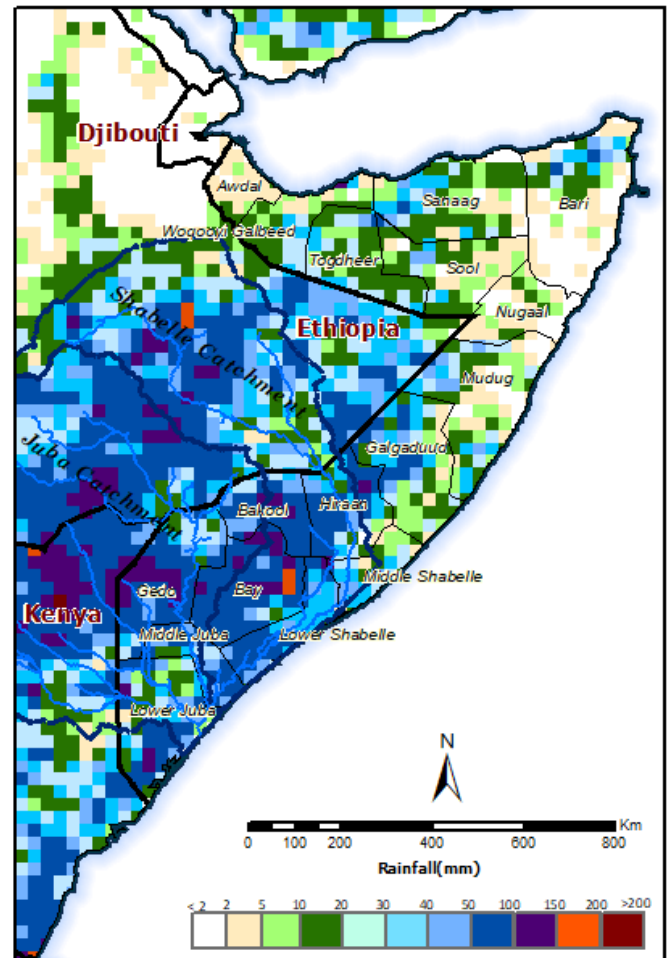
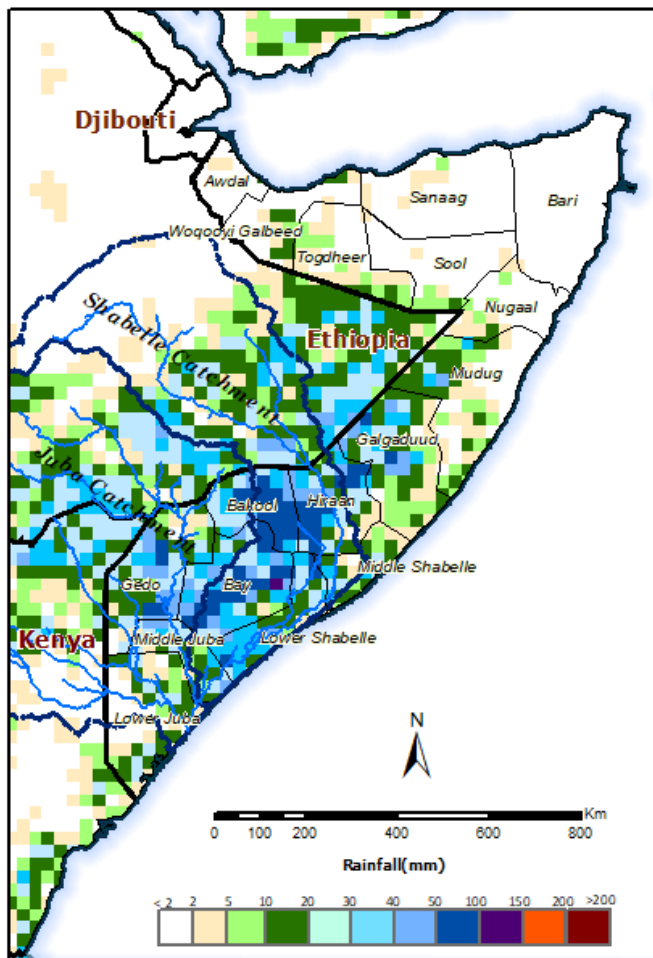
The cumulative rainfall forecast for the next three and seven days (Map 1 and 2) is calling for moderate to heavy rains in most parts of Juba and Shabelle river basins within Somali and the Ethiopian highlands.

The foreseen heavy rains may lead to a further increase in river flow along the Juba and Shabelle Rivers in Somalia, translating to a high risk of flooding along the two rivers. Areas to watch out for river flooding include the entire channel of Shabelle River as well as Gedo and Middle Juba regions along the Juba River. Flash floods are expected in built-up and low lying areas of Bay and Bakool regions given the forecast.

Users are advised that this is a forecast, and at times there may be discrepancies between estimates and actual amounts of rainfall received. Information on the forecast and observed river levels are updated daily on this link: <http://frrims.faoswalim.org>.

Map 1: 3 day cumulated rainfall forecast (14 - 16 Oct 2019)

Map 2: 7 day cumulated rainfall forecast (14 - 19 Oct 2019)



This update is produced by the: FAO - Somalia Water and Land Information Management—SWALIM Project. For more information please contact swalim@fao.org or visit <http://www.faoswalim.org>

FAO SWALIM Technical Partners:



SWALIM is Managed by FAO and Currently Funded by:

