



The early rains received in northern parts of Somalia since the first week of September continued to spread across the region over the last one week, marking an early start of the Deyr 2020 rainy season. Normally, the Sept/Oct—Dec rainy season is expected to start in late September in the northern parts and mid October in the southern areas of the country. The Ethiopian highlands, which contribute to the Juba and Shabelle river flow, continued to receive moderate rains over the last one week. River levels along the entire Shabelle River remained very high with flooding reported in parts of the riverine areas. In Belet Weyne and Bulo Burti the river levels are still above the high flood risk level to date, while in Jowhar the river is at moderate flood risk level.

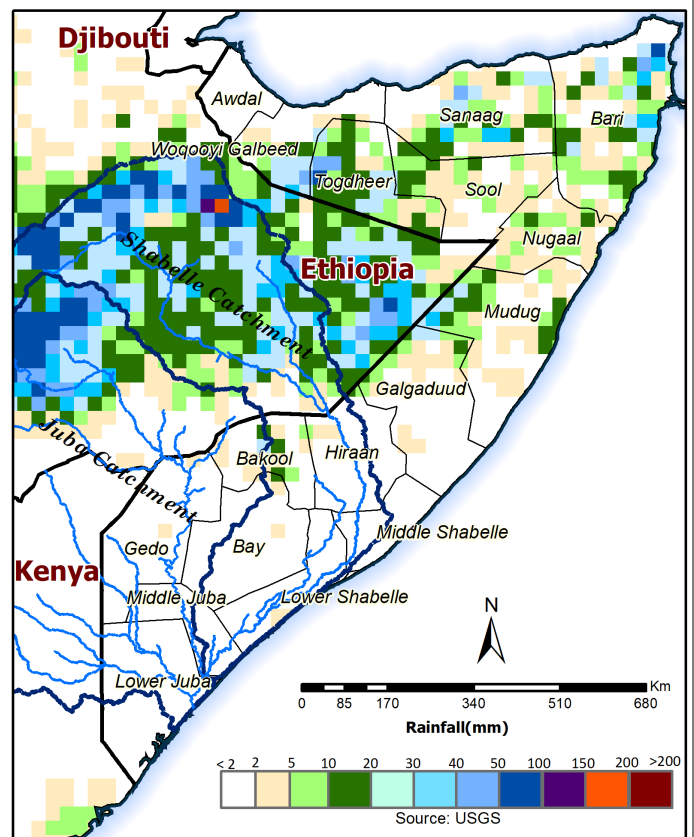
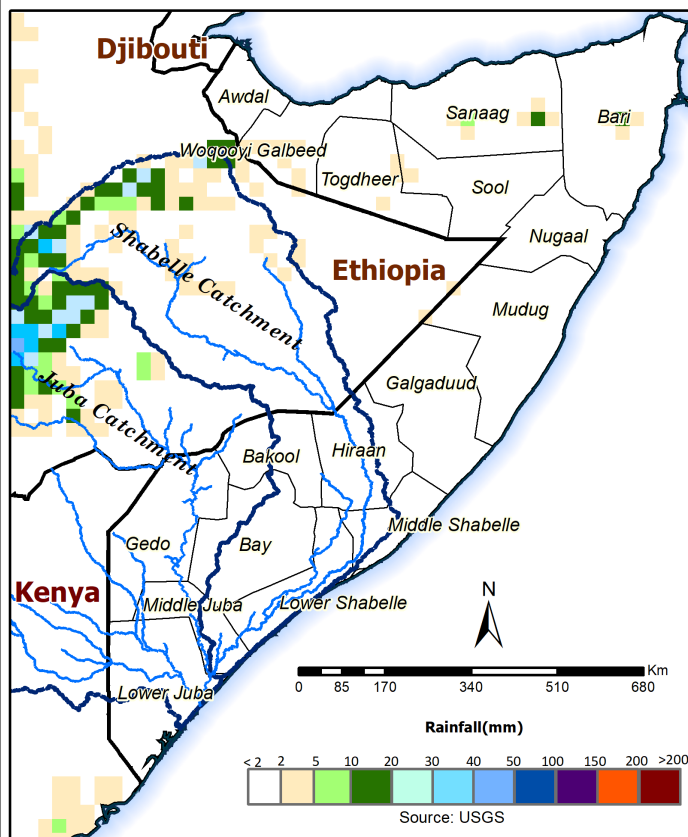
The cumulative rainfall forecast for this week indicates light to moderate rains spreading from the central to the northern parts of the country. Awdal Region will however will remain dry for the next one week. Bakool Region in the south is expected to receive light to moderate rains, while in the Ethiopian highlands there will be moderate to heavy rainfall over the same forecast period. This may lead to an increase of river levels along the Shabelle river thus increasing the risk of flooding especially in Hiraan and Middle Shabelle Regions.

Given the rainfall forecast and current situation along the two rivers, **High Risk** of flooding remains along the Shabelle while there is no risk of flooding foreseen along the Juba River.

Users are advised that this is a forecast and at times there may be discrepancies between estimates and actual amounts of rainfall received. Information on the forecast and observed river levels is updated daily and can be found on this link: <http://frrims.faoswalim.org>.

Map 1: 3 day cumulated rainfall forecast (24 - 26 Sept 2020)

Map 2: 7 day cumulated rainfall forecast (24 – 30 Sept 2020)



This update is produced by the: FAO - Somalia Water and Land Information Management—SWALIM Project.
For more information please contact: swalim@fao.org or visit <http://www.faoswalim.org>

FAO SWALIM Technical Partners:



SWALIM is Managed by FAO and Currently Funded by:

