



# FLOOD ADVISORY FOR JUBA AND SHABELLE RIVER CATCHMENTS, SOMALIA

Issued: 2nd November 2023

**Juba River: Current High Risk of Flooding along the Juba river and High Risk of Flash Flooding in Gedo region**

**Shabelle River: Projected High Risk of Flooding at BeletWeyne in 3 to 4 days**

**High Risk of Flash Flooding in parts of Middle Juba, Gedo, Mudug, Bay and Bakool Regions.**

## Juba River Catchment

Over the past three days, there has been a notable increase in both the amount and intensity of rainfall in the Gedo region and the Ethiopian highlands. The current water levels along the Juba River are now only 8 cm below bankful level at Dollow, 14 cm at Luuq, and under 40 cm at Bardheere.

The ongoing heavy rainfall, coupled with the forecasted moderate rains in the next 24 hours, with an accumulation of approximately 150 mm over the next three days across Gedo, are expected to cause the river level to reach bankful height. This presents a **high risk of riverine flooding** along the entire stretch of the Juba River. Additionally, there is a **high risk of flash flooding** in the Gedo region, particularly in the Garbahaarey district within the next 24 hours. Residents in Deeday, Buulo Oomin, Tuutees, and Dhayba should take all necessary precautions to ensure their safety. **Necessary anticipatory action should be taken.**

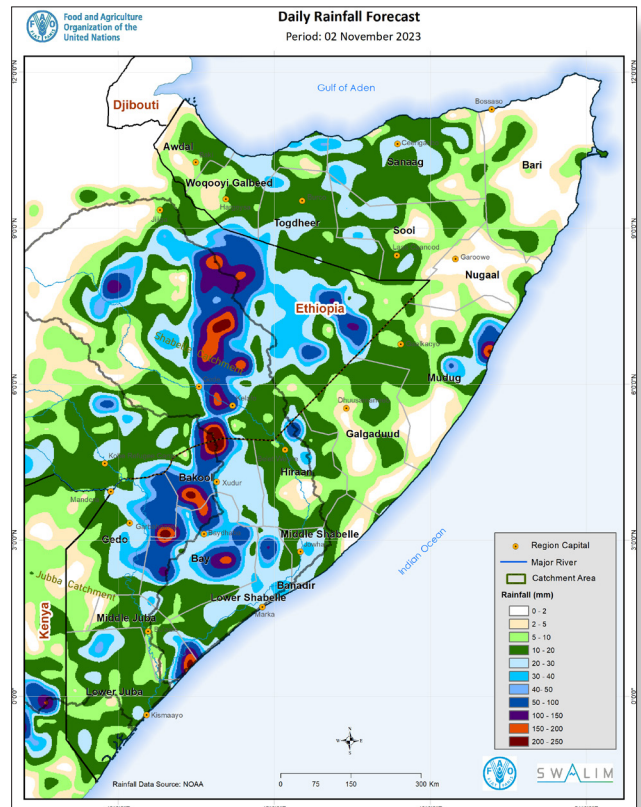
## Shabelle River Catchment

There has been a slight increase in water levels along the Shabelle River. The water levels are currently just 8.0 cm, 50.0 cm and 70.0 cm below the moderate flood risk levels at Beletweyne, Bulo Burte and Jowhar, respectively.

The runoff from forecast moderate rains within the catchment over the next three days in HirShabelle, is likely to lead to a gradual rise in water levels with moderate risk of flooding along the Shabelle River. There are also reports of high flood wave approaching the Somali-Ethiopia border which is projected to lead to a significant river level rise in 3 to 4 days.

## Flash Floods

Within the next 24 hours, heavy rains are anticipated over most areas of Bakool and Bay regions. As a result, there is a high risk of flash flooding in low-lying and vulnerable areas, particularly in Buur Hakabar, Diinsoor, Qansax Dheere, and Baydhaba districts in Bay, as well as Waajid and Ceel Barde districts in Bakool. Most parts of Middle Juba, including areas around Jilib, are expected to receive rainfall exceeding 100 mm, with coastal areas of Jilib experiencing particularly high amounts of over 200 mm, posing a significant risk of flash floods especially around Jiirta and Kuunyo-Burrow. Similarly, areas along the border of Hobyo and Jariiban districts in Mudug are likely to receive rainfall exceeding 200 mm, potentially leading to flash floods over Xingaras, Dhinooda, Ceel Dhahanaan, and Ceel Bacduur. Residents around the mentioned areas should take precautionary measures to ensure their safety.



Map 1: 24 hour cumulative rainfall on 2nd November 2023

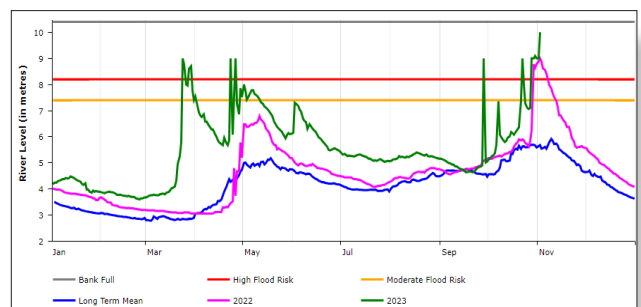


Figure 1: Juba River level at Bardheere gauging station as on 2nd November 2023

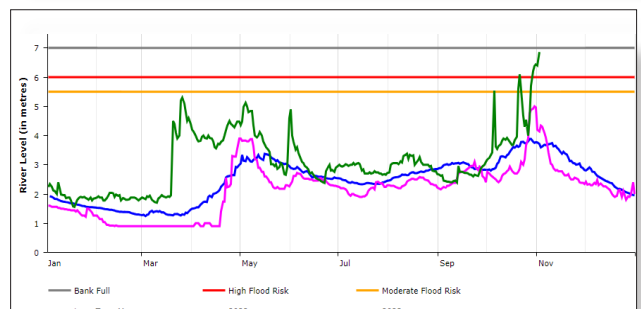


Figure 2: Juba River level at Luuq gauging station as on 2nd November 2023

SWALIM is a multi-donor project managed by FAO and currently funded by The European Union, SDC, FCDO, Government of France and USAID



Funded by the European Union

Schweizerische Eidgenossenschaft  
Confédération suisse  
Confederazione Svizzera  
Confederaziun svizra  
Swiss Agency for Development and Cooperation SDC

British Embassy Mogadishu

RÉPUBLIQUE FRANÇAISE  
Liberté  
Égalité  
Fraternité



USAID FROM THE AMERICAN PEOPLE