

Somalia Flood Watch

Issued: 31 May 2016



FLOOD WARNING LEVEL

KEY TO WARNING LEVELS

	Last Week	Coming Week
Shabelle		
Juba		

Severe Flooding Possible

Moderate Flooding (up to 5 year return period)

Minimal/No Flood Risk

During the week that ended on 30 May 2016, minimal rainfall activities were experienced in Juba and Shabelle basins inside Somalia as well as the Ethiopian highlands. Most stations recording no rainfall. The table below shows the total amounts received in some stations during the last week within the two basins.

Station Name	Luuq	Bardheere	Bur Hakaba	Dollow	Belet Weyne	Mataban
Rainfall (mm)	0.0	0.0	0.0	0.0	0.0	0.0

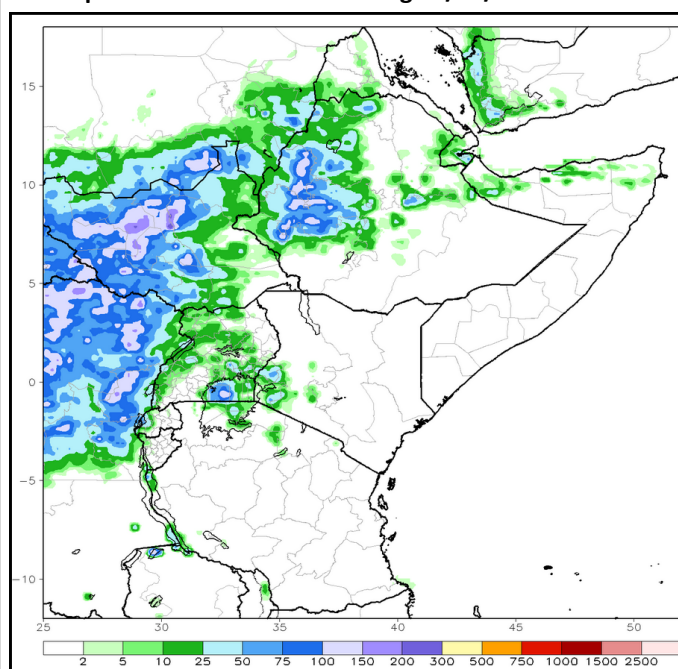
Station Name	Bulo Burti	Jowhar	Balcad	Mogadishu	Wanle Weyne	Jamame
Rainfall (mm)	0.0	2.0	0.0	0.0	0.0	8.0

Satellite rainfall estimates (Map-1) shows minimal rainfall amounts were received during the same period within the Juba and Shabelle basins; while the rainfall forecast for the coming week (Map – 2) indicates dry conditions will persist both inside Somalia and the Ethiopian highlands.

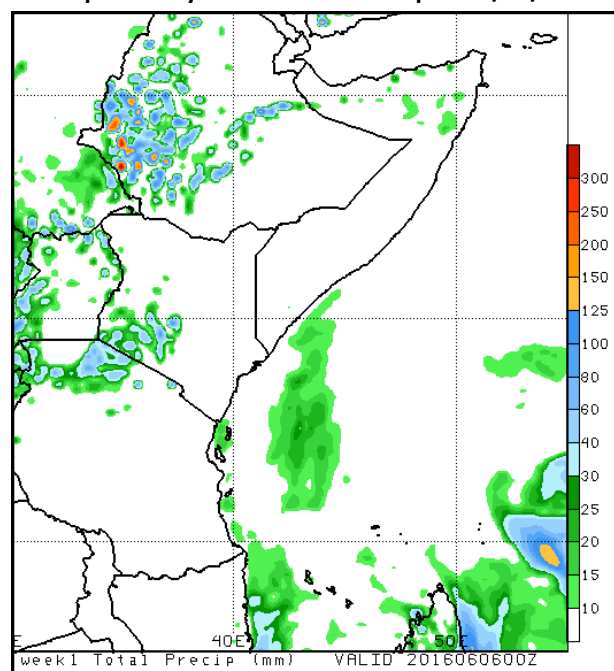
For over a week River levels at Belet Weyne remained at bank full resulting to flooding in the town and surrounding areas which caused displacements and damage of properties. The river level has started going down in Belet Weyne, but the flood wave is being transmitted downstream with a **moderate** risk of flooding along the Middle and Lower reaches.

River levels along the Juba have been reducing over the last two weeks. Given the rainfall forecast and the reducing trend there is **minimal** risk of flooding along the River.

Map –1: Total RFE: Week ending 30/05/2016



Map-2: 7-Day Rainfall Forecast: up to 06/06/2016



This bulletin is produced by the FAO Somalia Water and Land Information Management (SWALIM). For more information send an e-mail to SO-Hydro@fao.org or visit <http://www.faoswalim.org>

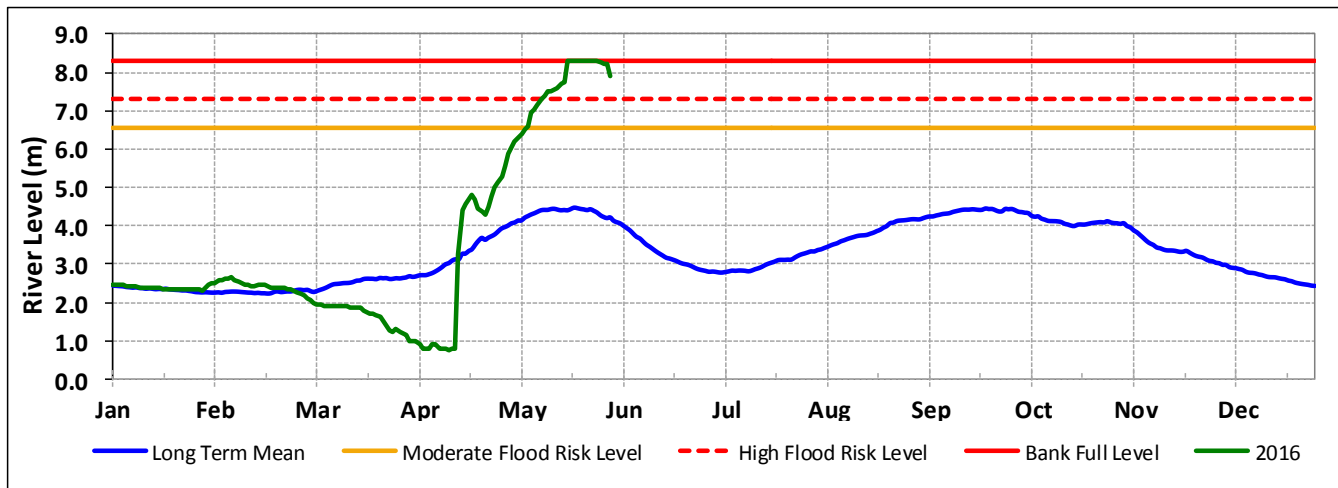
Technical Partners



SWALIM Funding Agencies



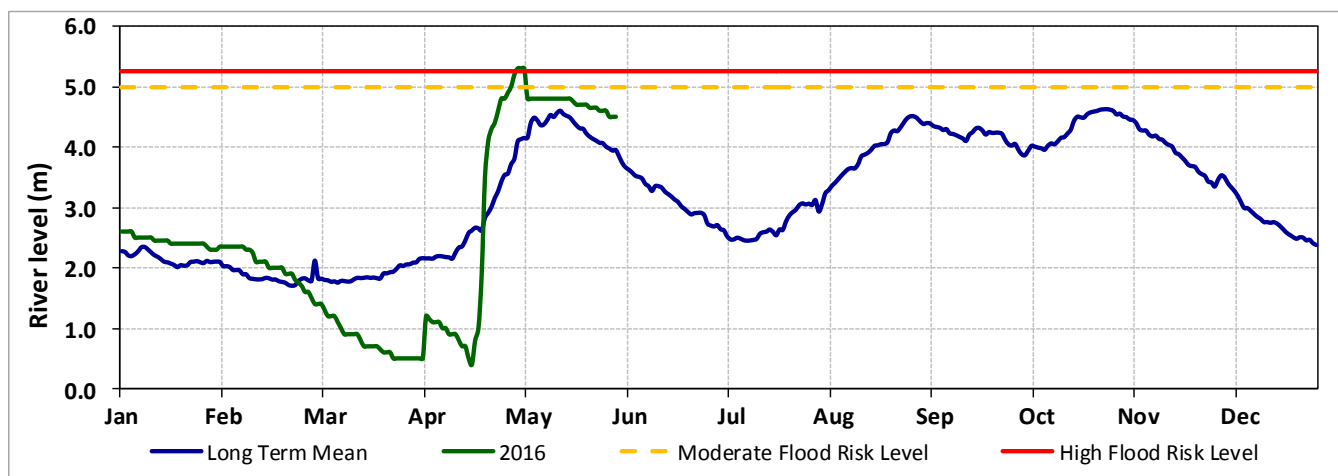
Belet Weyne



Date	Observed River Level (m)	Moderate Flood Risk Level (m)	High Flood Risk Level (m)
31/05/2016	7.92	6.50	7.30

Observed river levels at Belet Weyne started to decrease in the last 4 days, after remaining at bank full level for over a week. Today's river level is 7.92m which is 38cm from Bank full.

Jowhar



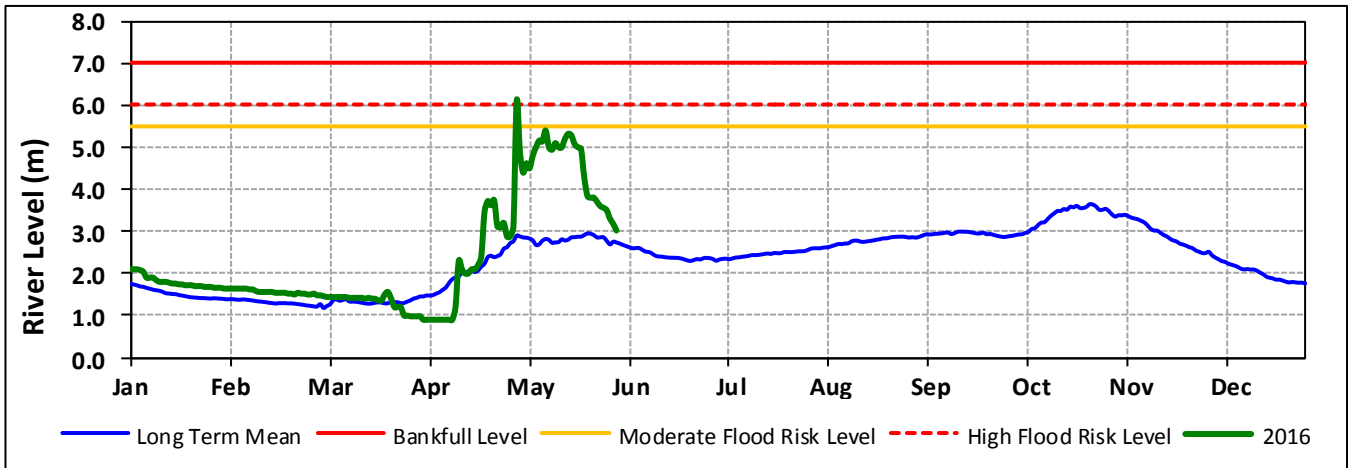
Date	Observed River Level (m)	Moderate Flood Risk Level (m)	High Flood Risk Level (m)
31/05/2016	4.50	5.00	5.25

Observed river levels at Jowhar decreased slightly over the last one week. Today's river level is 4.50m which is 50cm below the moderate flood risk level.

Forecast for coming week for Shabelle

The flood wave experienced in Belet weyne last week is being transmitted to downstream reaches. River level at Bulu Burti has been steadily rising, and reached the moderate flood risk level today. The wave is expected to reach Jowhar later in the week. With the current high river levels and weak / open river banks, there is a moderate risk of flooding along the Shabelle River in the coming week.

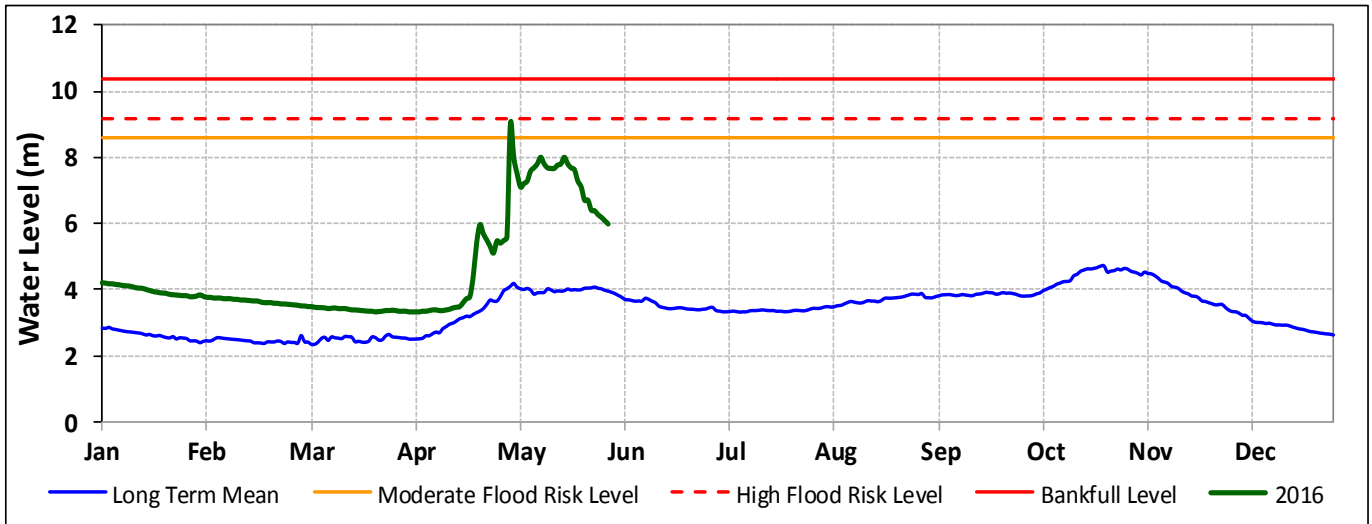
Luuq



Date	Observed River Level (m)	Moderate Flood Risk Level (m)	High Flood Risk Level (m)
31/05/2016	3.02	5.50	6.00

Observed river level at Luuq continued to decrease over the last week. Today's river level is 3.02m which is 2.48m below the moderate flood risk level.

Bardheere



Date	Observed River Level (m)	Moderate Flood Risk Level (m)	High Flood Risk Level (m)
31/05/2016	5.90	8.58	9.18

Observed river levels at Bardheere decreased over the last week. Today's river level is 5.90m which is 2.68m below the moderate flood risk level.

Forecast for coming week for Juba

Given the rainfall forecast for coming week and the reducing trend of river levels there is a minimal risk of flooding along the Juba River.