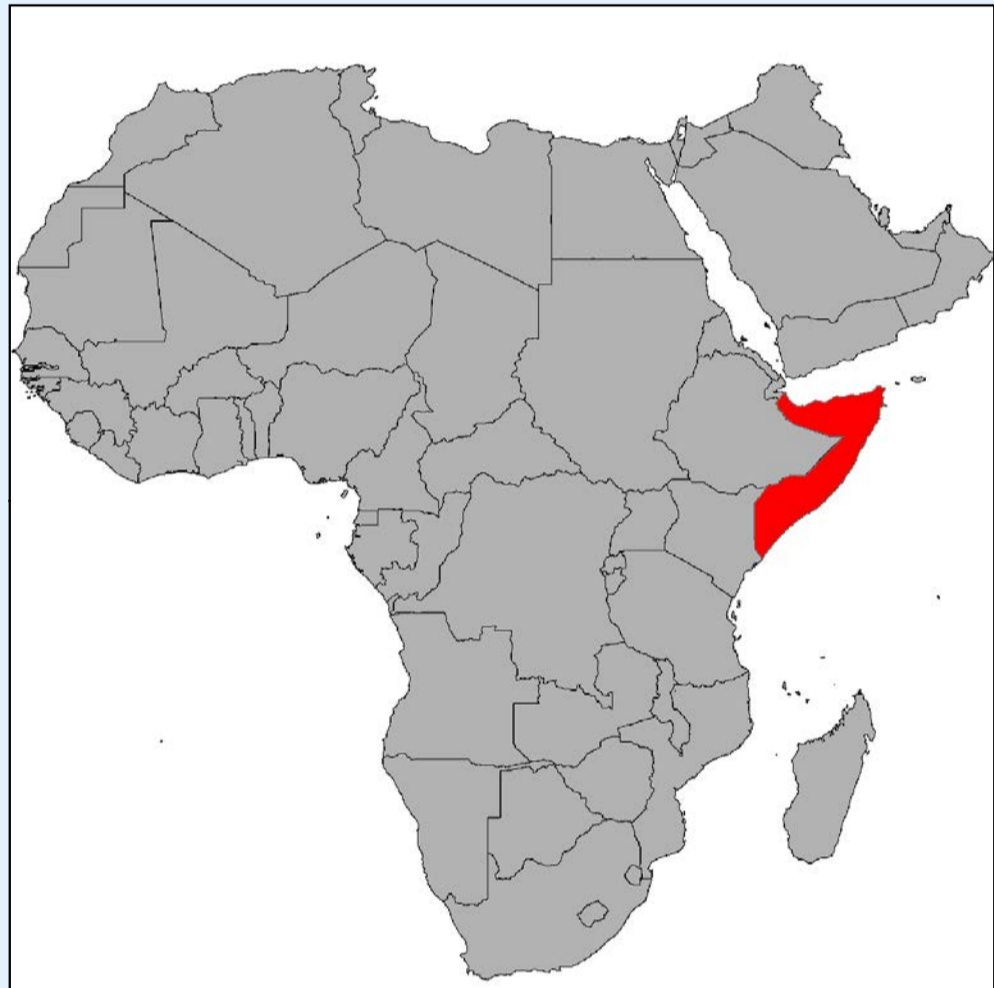
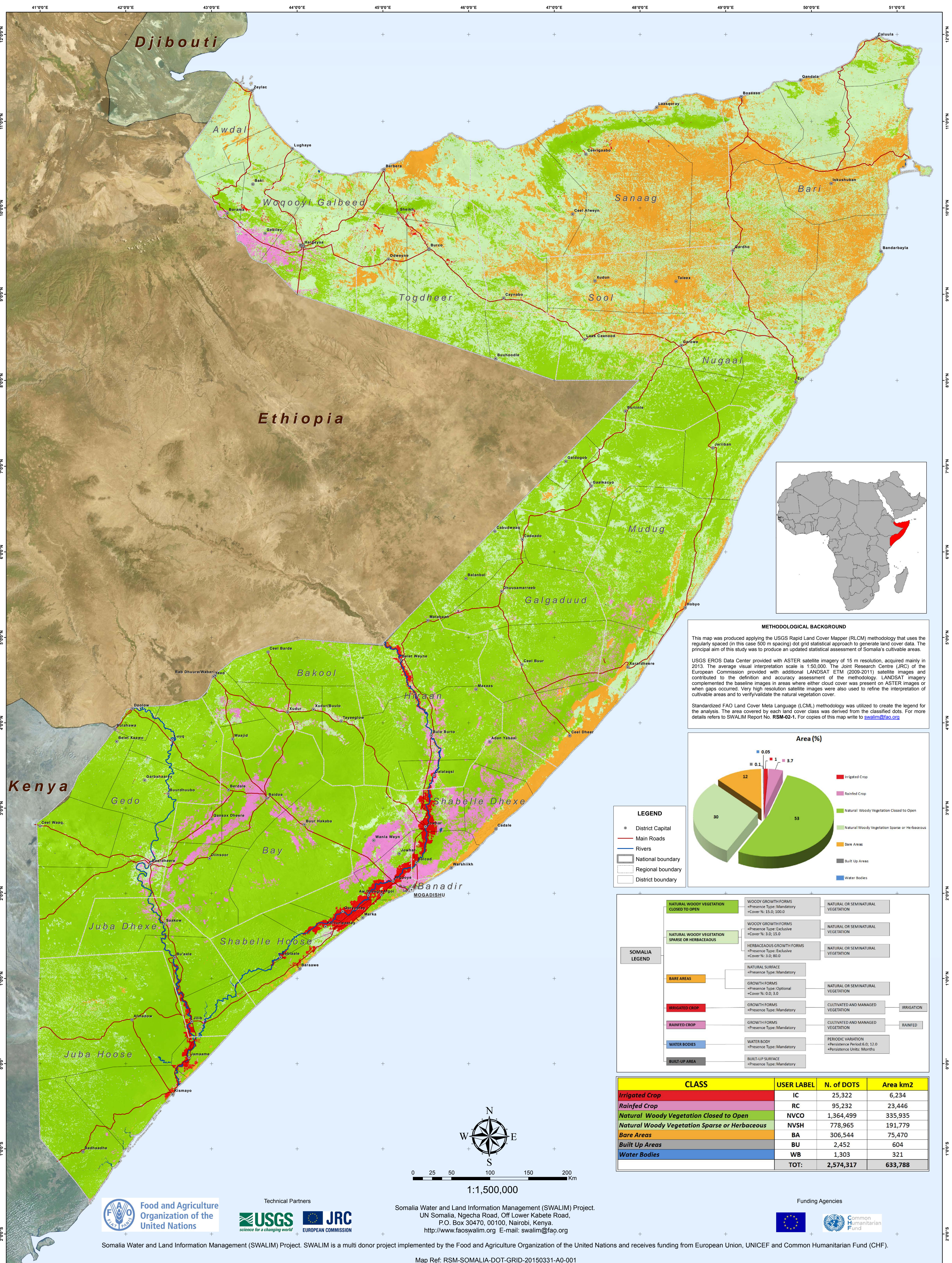


Somalia Land Cover / Land Use

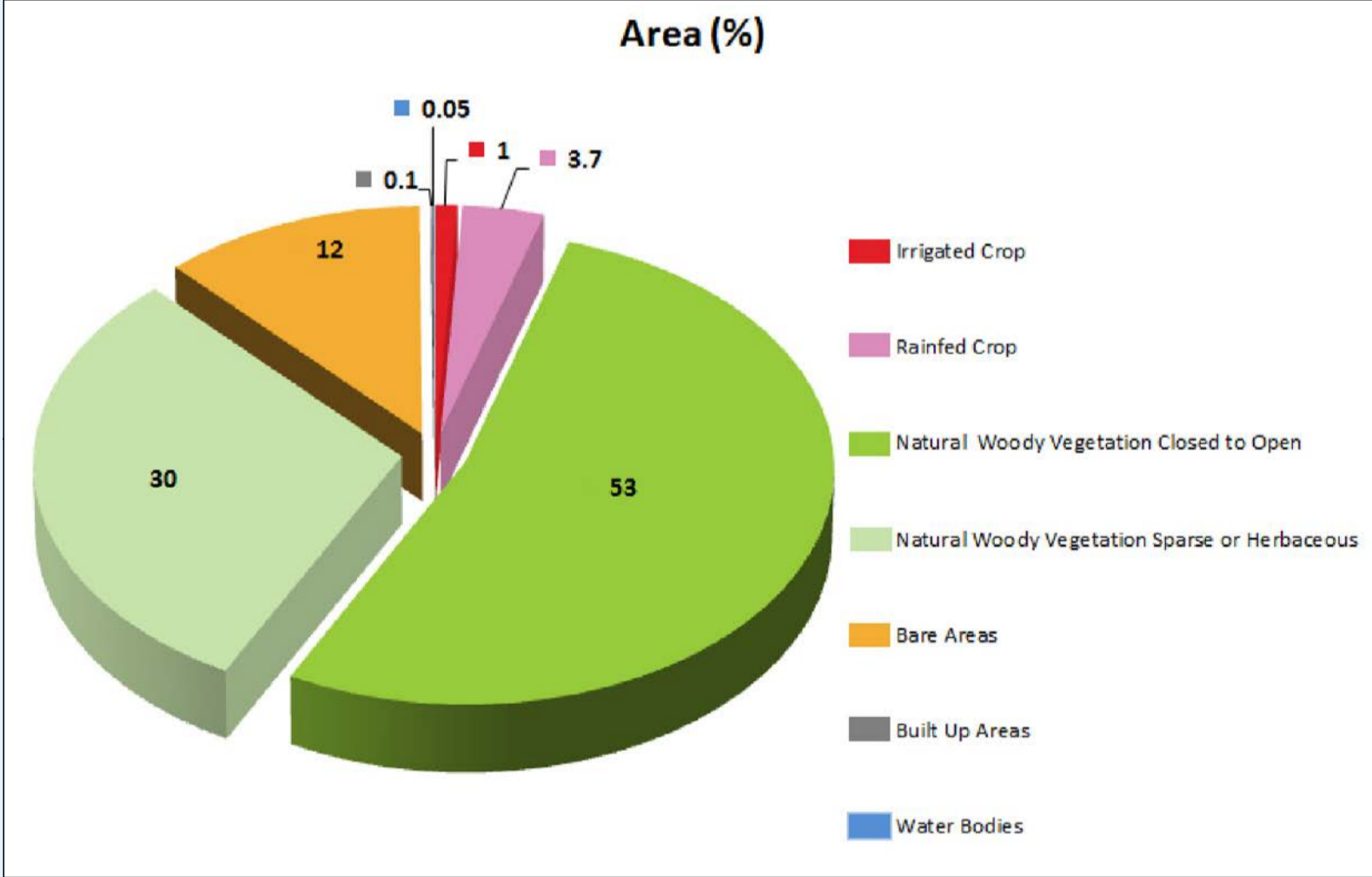


METHODOLOGICAL BACKGROUND

This map was produced applying the USGS Rapid Land Cover Mapper (RLCM) methodology that uses the regularly spaced (in this case 500 m spacing) dot grid statistical approach to generate land cover data. The principal aim of this study was to produce an updated statistical assessment of Somalia's cultivable areas.

USGS EROS Data Center provided with ASTER satellite imagery of 15 m resolution, acquired mainly in 2013. The average visual interpretation scale is 1:50,000. The Joint Research Centre (JRC) of the European Commission provided with additional LANDSAT ETM (2009-2011) satellite images and contributed to the definition and accuracy assessment of the methodology. LANDSAT imagery complemented the baseline images in areas where either cloud cover was present on ASTER images or when gaps occurred. Very high resolution satellite images were also used to refine the interpretation of cultivable areas and to verify/validate the natural vegetation cover.

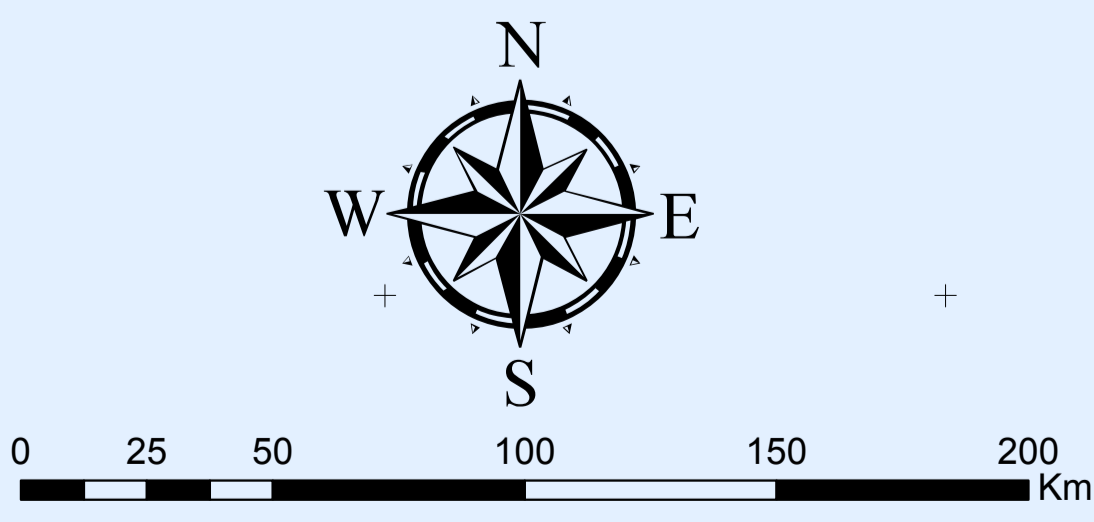
Standardized FAO Land Cover Meta Language (LCML) methodology was utilized to create the legend for the analysis. The area covered by each land cover class was derived from the classified dots. For more details refers to SWALIM Report No. RSM-02-1. For copies of this map write to swalim@fao.org



- LEGEND**
- District Capital
 - Main Roads
 - Rivers
 - National boundary
 - Regional boundary
 - District boundary

SOMALIA LEGEND	WOODY GROWTH FORMS	NATURAL OR SEMINATURAL VEGETATION
NATURAL WOODY VEGETATION CLOSED TO OPEN	WOODY GROWTH FORMS +Presence Type: Mandatory +Cover %: 15.0; 100.0	NATURAL OR SEMINATURAL VEGETATION
NATURAL WOODY VEGETATION SPARSE OR HERBACEOUS	WOODY GROWTH FORMS +Presence Type: Exclusive +Cover %: 3.0; 15.0	NATURAL OR SEMINATURAL VEGETATION
BARE AREAS	HERBACEOUS GROWTH FORMS +Presence Type: Exclusive +Cover %: 3.0; 80.0	NATURAL OR SEMINATURAL VEGETATION
IRRIGATED CROP	NATURAL SURFACE +Presence Type: Mandatory	NATURAL OR SEMINATURAL VEGETATION
RAINFED CROP	GROWTH FORMS +Presence Type: Optional +Cover %: 0.0; 3.0	NATURAL OR SEMINATURAL VEGETATION
WATER BODIES	GROWTH FORMS +Presence Type: Mandatory	CULTIVATED AND MANAGED VEGETATION
BUILT-UP AREA	GROWTH FORMS +Presence Type: Mandatory	CULTIVATED AND MANAGED VEGETATION
	WATER BODY +Presence Type: Mandatory	PERIODIC VARIATION +Persistence Period: 6.0; 12.0 +Persistence Units: Months
	BUILT-UP SURFACE +Presence Type: Mandatory	

CLASS	USER LABEL	N. of DOTS	Area km2
Irrigated Crop	IC	25,322	6,234
Rainfed Crop	RC	95,232	23,446
Natural Woody Vegetation Closed to Open	NVCO	1,364,499	335,935
Natural Woody Vegetation Sparse or Herbaceous	NVSH	778,965	191,779
Bare Areas	BA	306,544	75,470
Built Up Areas	BU	2,452	604
Water Bodies	WB	1,303	321
TOT:		2,574,317	633,788



Somalia Water and Land Information Management (SWALIM) Project.
UN Somalia, Ngecha Road, Off Lower Kabete Road,
P.O. Box 30470, 00100, Nairobi, Kenya.
<http://www.faoswalim.org> E-mail: swalim@fao.org



Somalia Water and Land Information Management (SWALIM) Project. SWALIM is a multi donor project implemented by the Food and Agriculture Organization of the United Nations and receives funding from European Union, UNICEF and Common Humanitarian Fund (CHF).

Map Ref: RSM-SOMALIA-DOT-GRID-20150331-A0-001

Source: Esri, DigitalGlobe, GeoEye, Earthstar Geographics, CNES/Airbus DS, USDA, USGS, AeroGRID, IGN, IGP, swisstopo, and the GIS User Community